

A PROJECT BY



A PROJECT BY



An address to scale up
your life

silver[®]
Brook 2

A *Legacy* of 35 Years

Completed
40+ Projects

Delivered Over
35 Lac Sq. Ft. Space

Connected to
3500+ Customers

Developed
5+ Areas in City



An address to
everything *spacious*

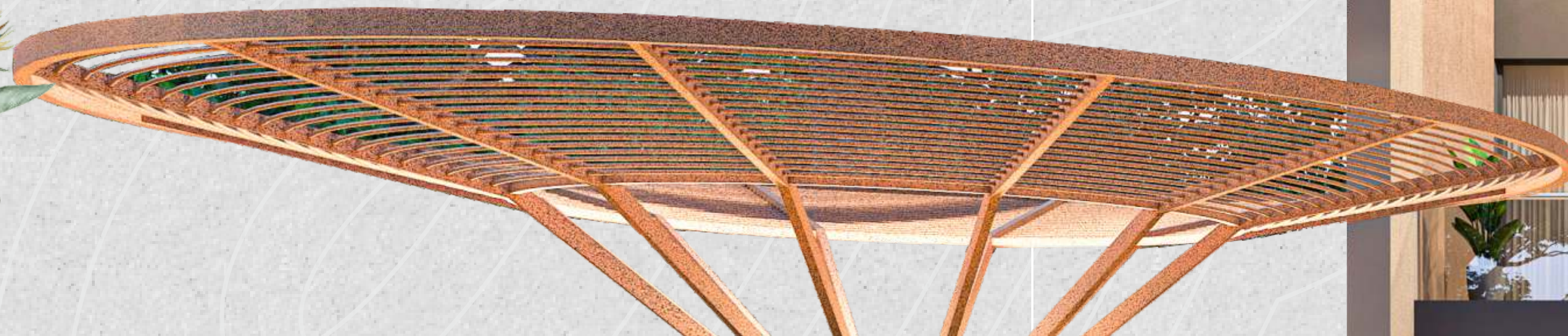


silver
Brook 2

3 BHK Fine *living*



An address to
everything *contemporary*



Feature-packed G+2
clubhouse for an unmatched *lifestyle*



AMENITIES



Multipurpose Hall



Clubhouse



Landscape Garden



Allotted Car Parking



Indoor Games



TV Lounge



Air & Light Ventilation



GYM



Kids Play Area



An address to everything *lush*



Lavishly designed
greenscapes
for a pleasant routine



An address to
everything *peaceful*

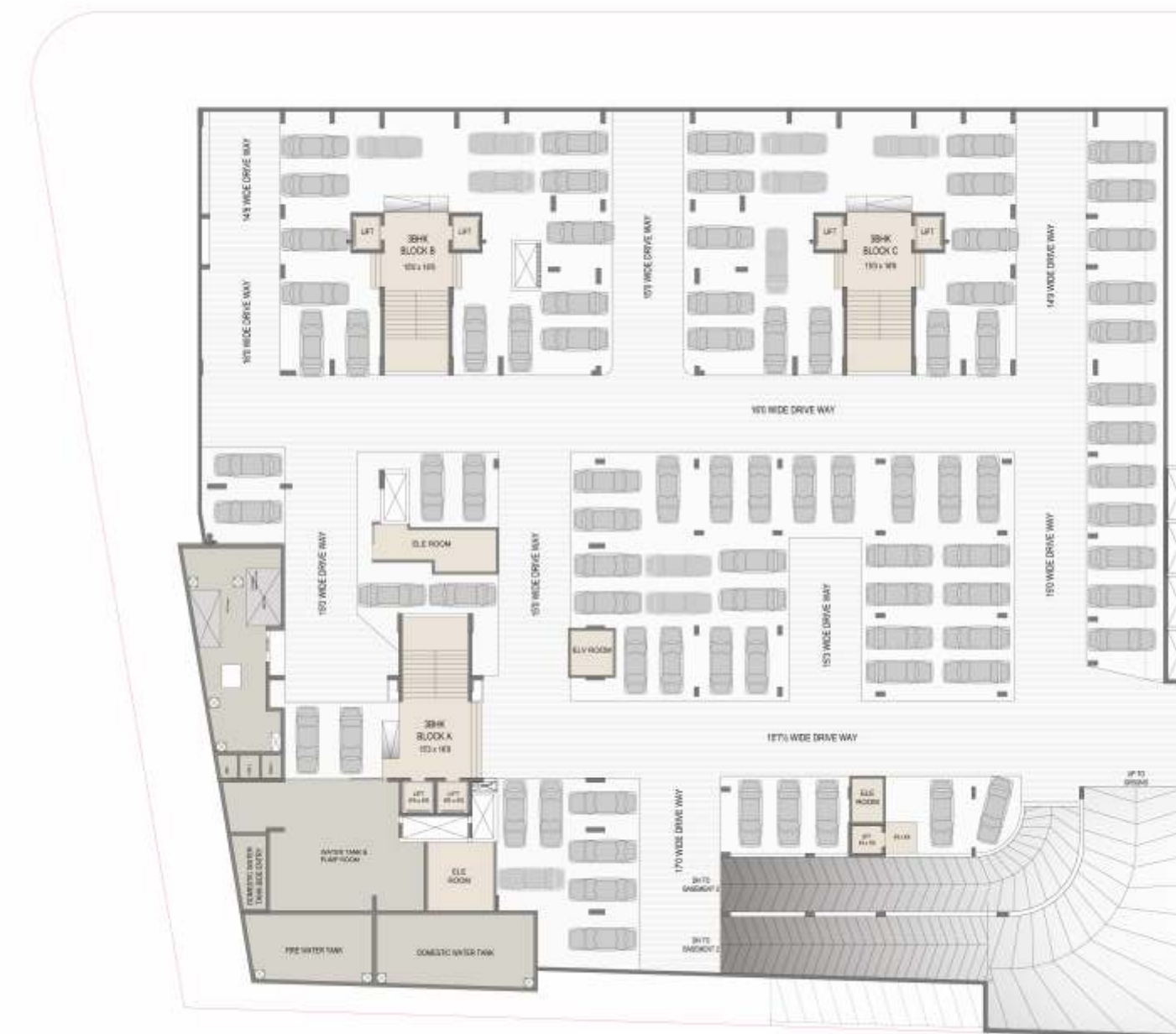


Serene & scenic
surroundings for

delightful
moments



Typical Floor Layout



Basement - 1

Basement - 2
Layout



Unit Plan - 3 BHK
Type 1



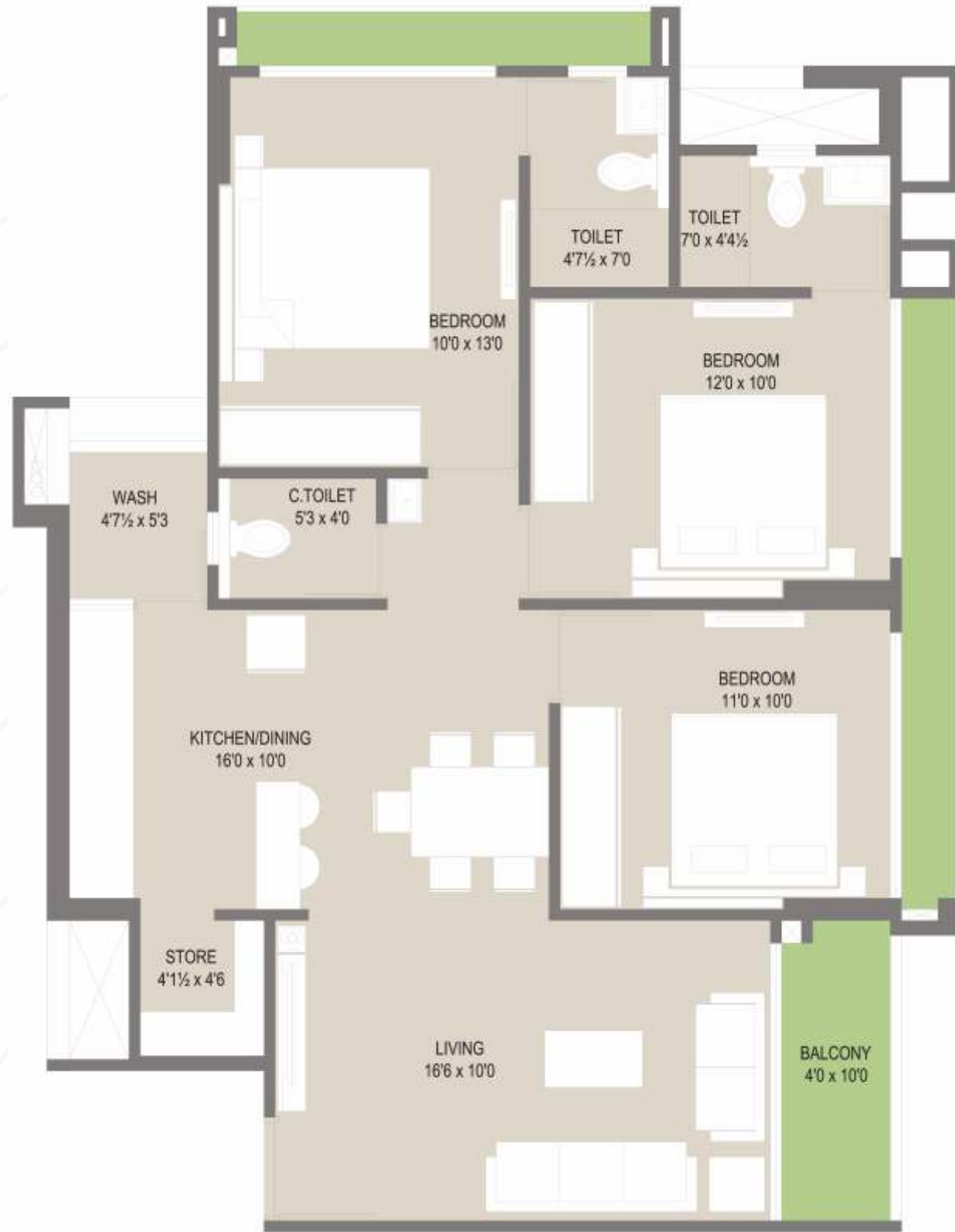
Unit Plan - 3 BHK
Type 2



Unit Plan - 3 BHK
Type 3



Unit Plan - 3 BHK
Type 4



GROUND FLOOR PLAN



FIRST FLOOR PLAN



SECOND FLOOR PLAN

Club Floor
Layout

Specification

STRUCTURE

- Earthquake resistant R.C.C. frame structure with sand block walls.

FLOORING

- Vitrified flooring in living, dining, kitchen & all bedrooms.

KITCHEN

- Sandwich platform with SS Sink.
- Tile dado up to lintel level on wall above the platform.
- Service platform with adequate storage space.
- Provision for exhaust fan.

BATHROOMS

- Anti-skid ceramic tiles for flooring.
- Tile dado up to lintel level.
- European type w/c pan in all bathrooms.
- Premium quality sanitaryware & C.P. fittings.
- Waterproofing in all bathrooms.
- Exhaust fan provision.
- Geyser point in all bathrooms.
- Rigid PVC pipes for drainage & plumbing.

DOORS

- Both side laminated flush door with wooden frame.
- Standard quality fittings for all doors.

AVIRAT INFRASTRUCTURE PVT. LTD.

Avirat House, Nr. Science City, Sola, Ahmedabad - 380060.

Mobile: +91 99250 13951 • +91 95580 13951

Email: info@aviratgroup.com

Website: www.aviratgroup.com

SILVER BROOK 2

Canal Road, Nr. Silver Brook, B/h. S. P. Ring Road, Shilaj, Ahmedabad - 380059

Mobile: +91 89809 09010

WINDOWS

- Aluminum / UPVC glass window.

ELECTRIFICATION

- Power Supply : 1 Phase for 2 BHK & 3 Phase for 3 BHK.
- Modular switches, copper wiring & safety switch gear.
- Sufficient power outlets & light points provided.

ELEVATOR

- 2 Highspeed elevators in each block. (1 Passenger & 1 Stretcher)

COLOUR & WALL FINISH

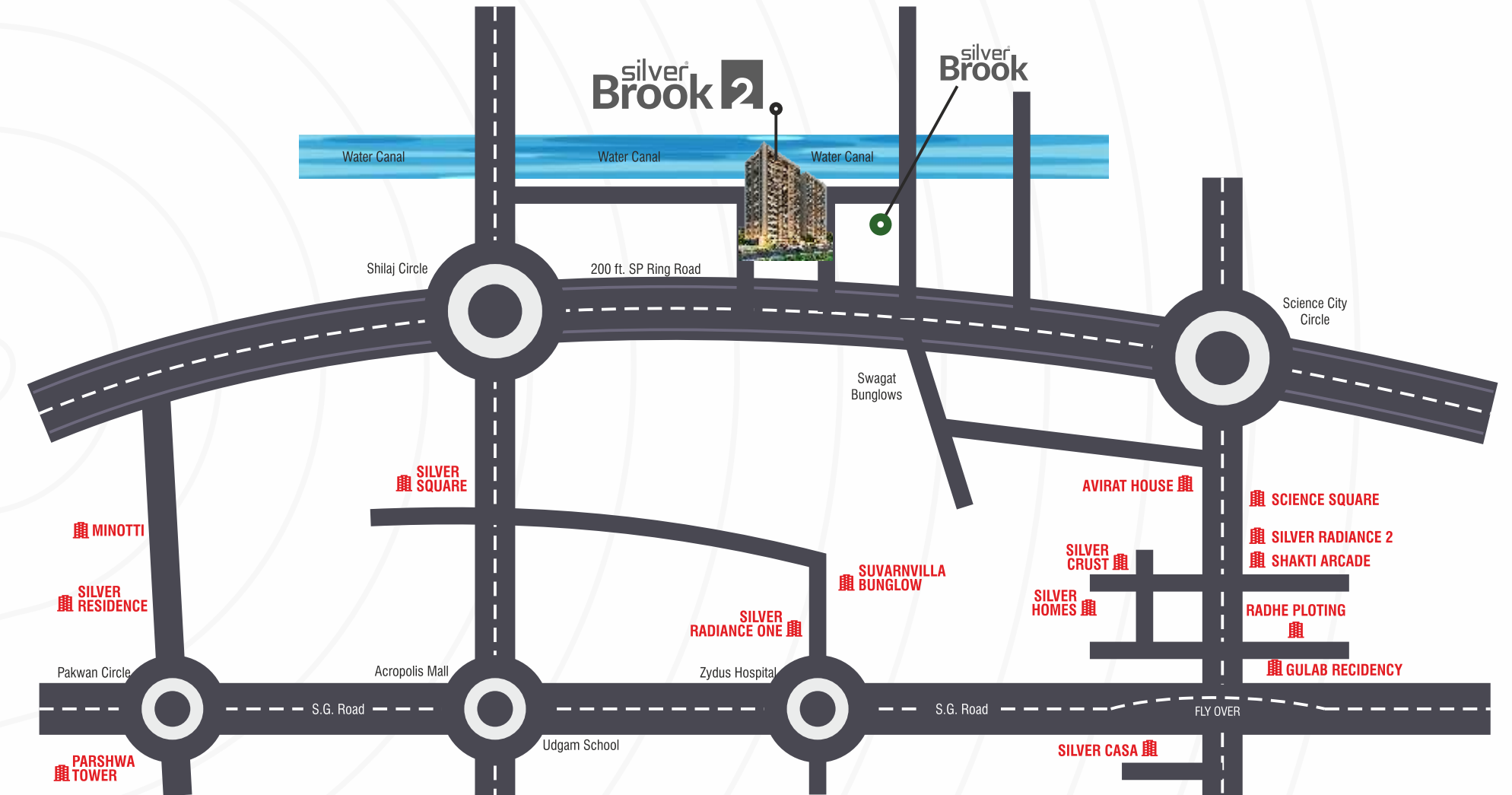
- Internal wall : Single mala plaster with putty.
- External wall : Double coat sand face plaster with texture.

FIRE

- Fire safely as per norms & regulations.

TERRACE

- Terrace finished with water proofing & china mosaic for heat reflection.



Shilaj Circle - **3 minutes** | Sindhu Bhavan Road - **5 minutes** | Science City - **10 minutes**
S. G. Highway - **15 minutes** | Prahlad Nagar - **20 minutes** | Vaishnodevi circle - **20 minutes**

Location Map